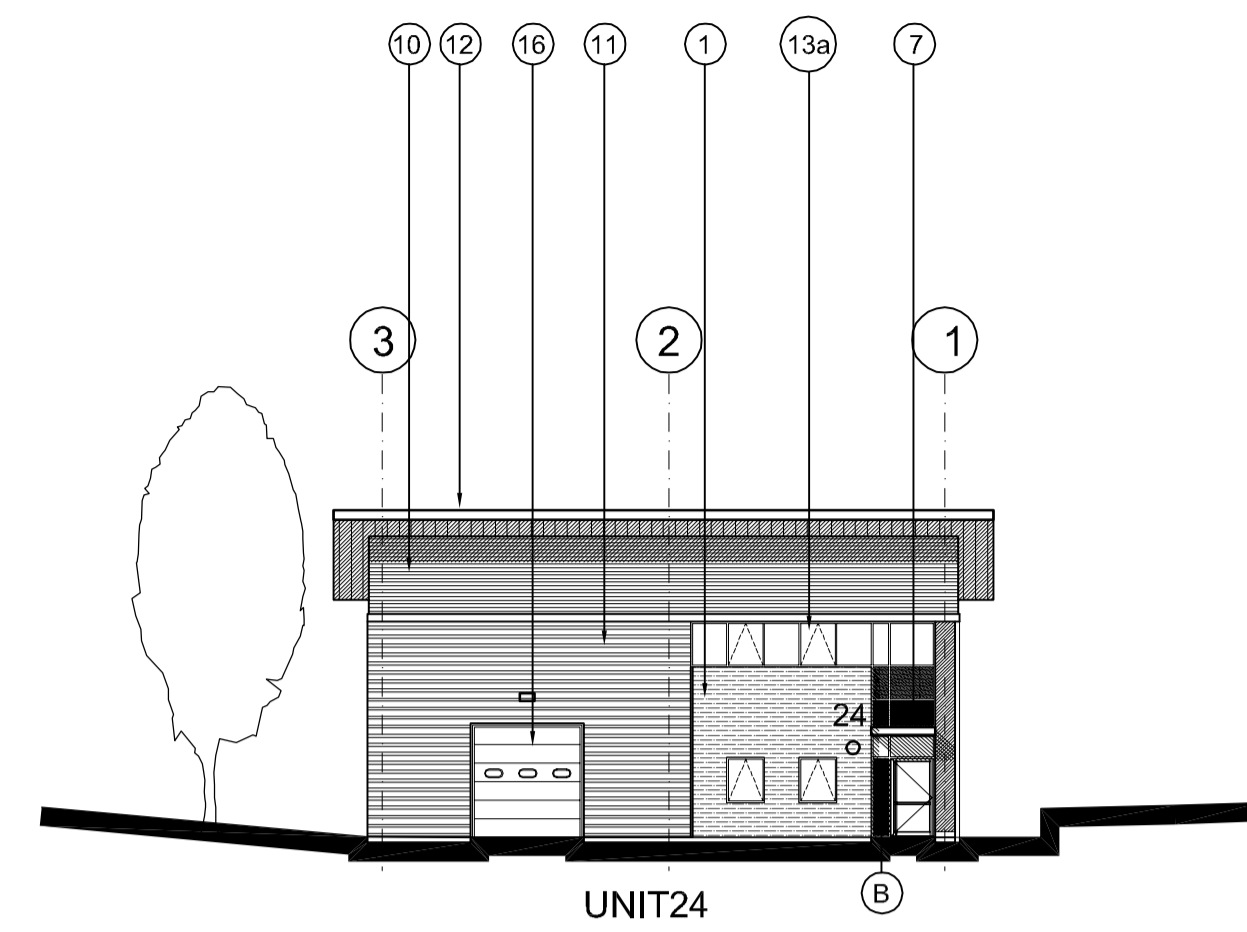


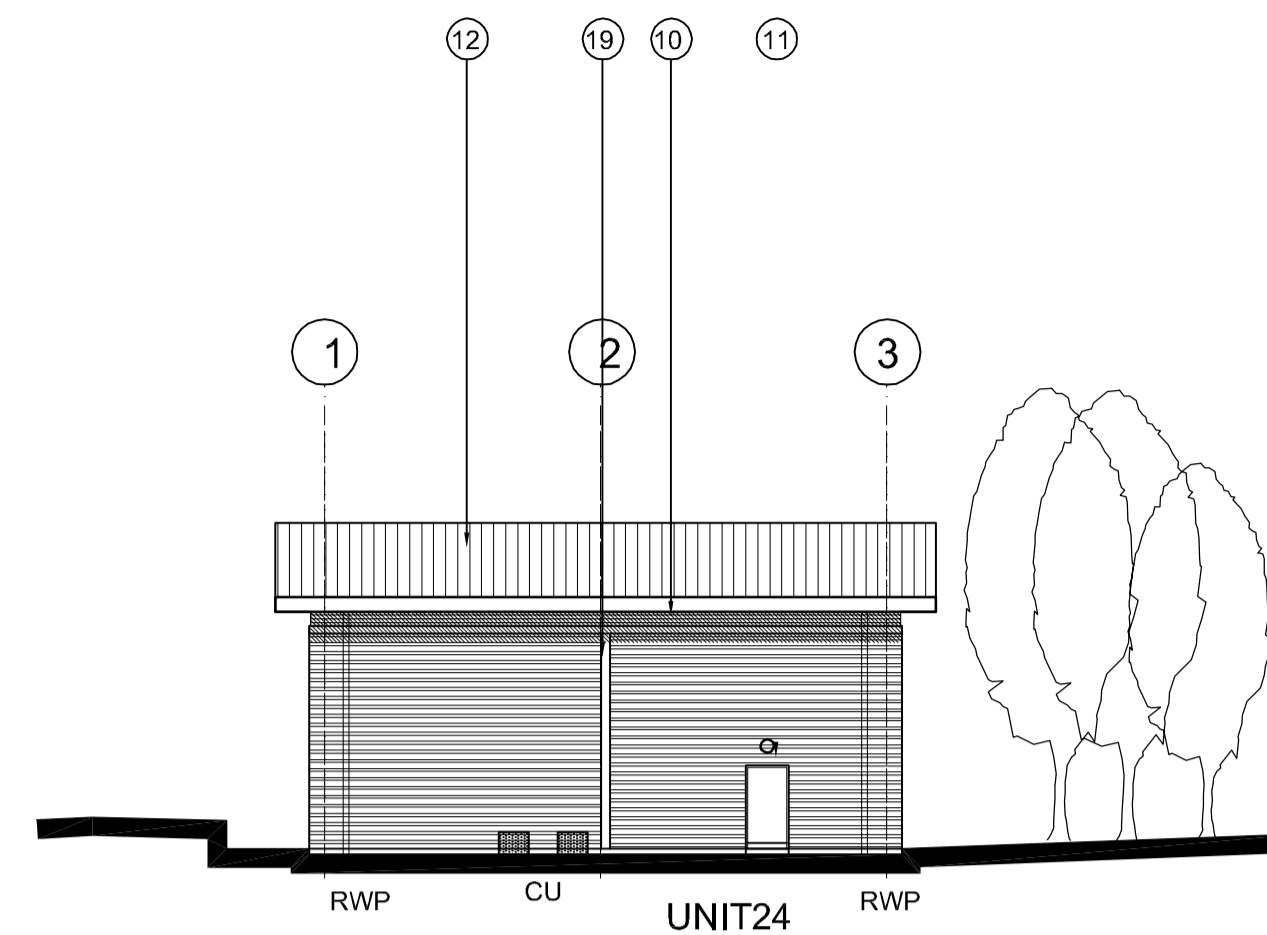
SCHEDULE OF EXTERNAL FACING MATERIALS

INDUSTRIAL UNITS

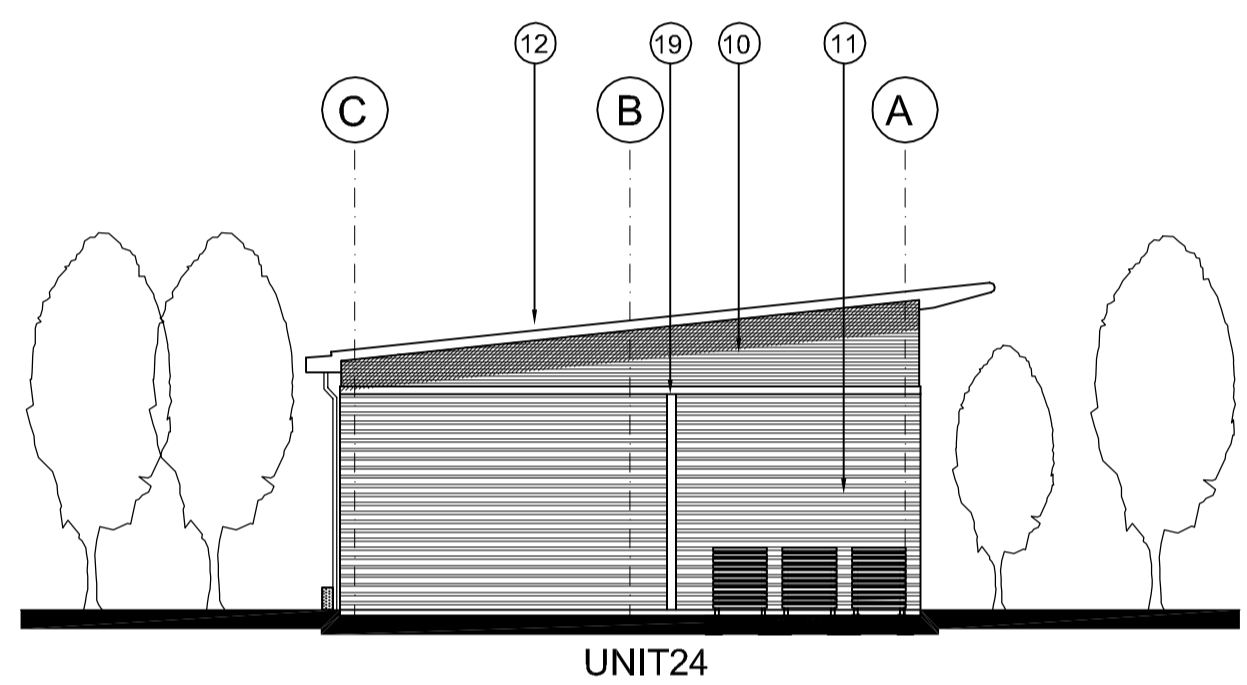
- |                                      |   |
|--------------------------------------|---|
| 1 Facing Brick                       | Kingsbury Smooth Cream  |
| 6 Overhanging roof soffit and Fascia | Flat metal panels colour: Prisma Zeus metallic dark grey with recessed downlighters in soffit                   |
| 7 Entrance Canopy                    | Flat metal panels colour: Prisma Zeus metallic dark grey with recessed downlighters in soffit                   |
| 10 Profiled Wall Cladding            | Horizontally laid sinusoidal profiled steel cladding<br>Colour: Prisma Grey Aluminium RAL 9007                  |
| 11 Profiled Wall Cladding            | Horizontally laid half round profiled steel cladding<br>Colour: Prisma Silver Metallic RAL 9006                 |
| 12 Unit Roof                         | Fully Insulated composite roof panel<br>Colour : HPS 200 Albatross Light Grey                                   |
| 13a Windows                          | Clear low E glass in polyester powder coated aluminium window system. Colour : RAL 7015 Charcoal grey           |
| 13b Windows                          | Laminated translucent glass in polyester powder coated aluminium window system. Colour : Charcoal grey RAL 7015 |
| 13c Windows                          | Laminated blue glass panels in polyester powder coated aluminium window system. Colour : Charcoal grey RAL 7015 |
| 14 Unit number                       | Stainless Steel numeral   |
| 15 High Level Horizontal Band        | High Level Recessed Horizontal Feature Band<br>Charcoal grey RAL 7015   |
| 16 Loading Doors                     | Stucco finished aluminium   |
| 17 Personnel/fire exit Doors         | Coated steel doors Prisma Grey Aluminium  |
| 18 Joints                            | Vertical 'T' Flashing colour Charcoal grey RAL 7015   |
| 19 Joints                            | Recessed 300mm wide vertical flashing - colour Charcoal grey RAL 7015   |



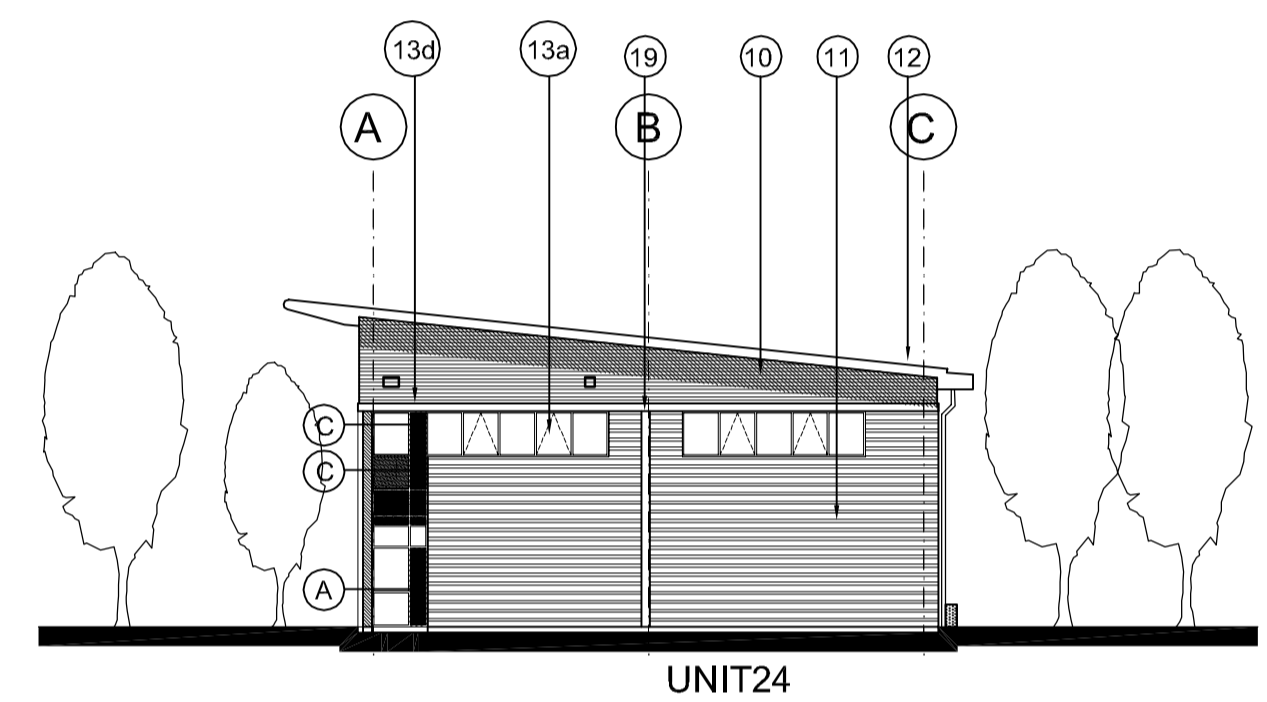
01 UNIT 24 NORTH ELEVATION  
1219 1:200



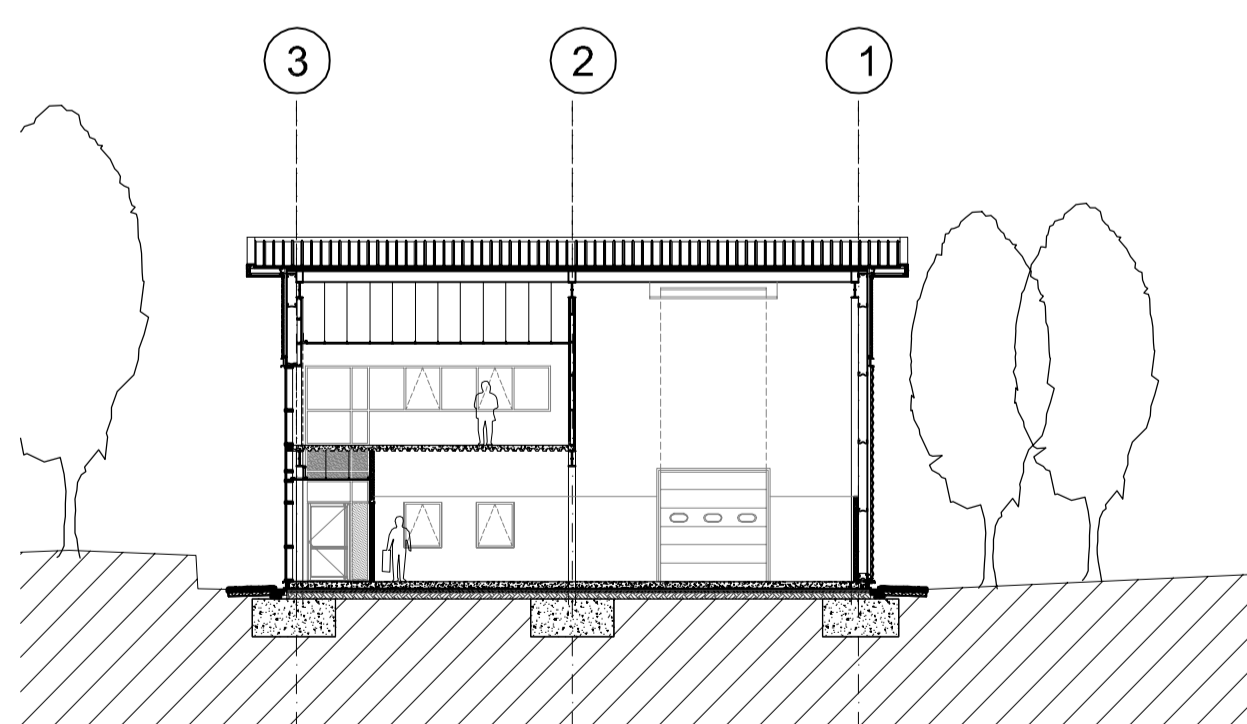
02 UNIT 24 SOUTH ELEVATION  
1219 1:200



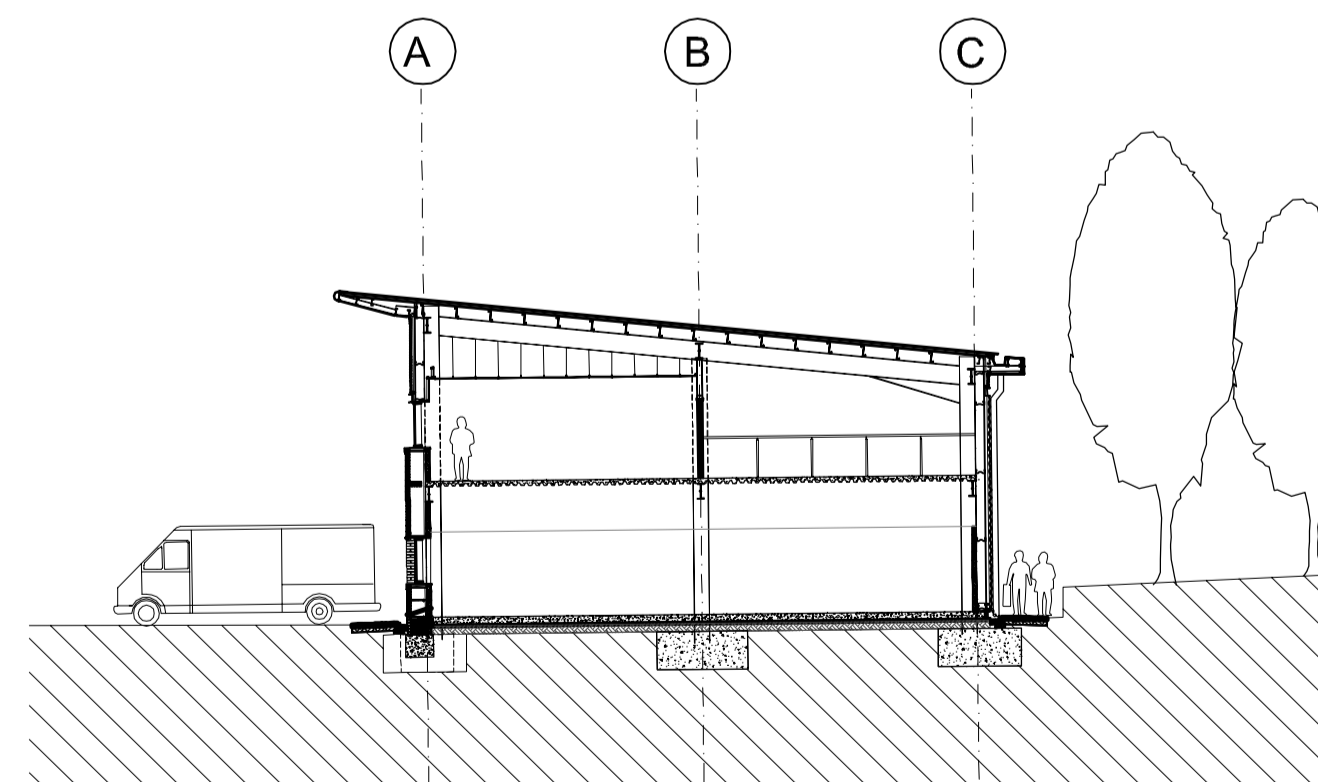
03 UNIT 24 WEST ELEVATION  
1219 1:200



04 UNIT 24 EAST ELEVATION  
1219 1:200



UNIT 24 SECTION A-A  
1:200



06 UNIT 24 SECTION B-B  
1219 1:200

- A 6.8mm VANCEVA LAMINATED BLUE GLASS TOUGHENED PANE - REF TRUE BLUE  
16mm ARGON SPACER COMPRISING 90% ARGON  
6mm CLEAR LOW E-GLASS TOUGHENED
- B 6.8mm VANCEVA LAMINATED BLUE GLASS TOUGHENED PANE - REF AQUAMARINE  
16mm ARGON SPACER COMPRISING 90% ARGON  
6mm CLEAR LOW E-GLASS TOUGHENED
- C 6.8mm VANCEVA LAMINATED BLUE GLASS TOUGHENED PANE - REF SAPPHIRE  
16mm ARGON SPACER COMPRISING 90% ARGON  
6mm CLEAR LOW E-GLASS TOUGHENED
- D 6.8mm VANCEVA LAMINATED BLUE GLASS TOUGHENED PANE - REF 6166  
16mm ARGON SPACER COMPRISING 90% ARGON  
6mm CLEAR LOW E-GLASS TOUGHENED

NOTES:

- SUBJECT TO STATUTORY CONSENTS
- SUBJECT TO SURVEY
- BASED ON OS MAP REPRODUCED BY PERMISSION OF CONTROLLER OF HM STATIONARY OFFICE (c) CROWN COPYRIGHT
- COPYRIGHT RESERVED
- DO NOT SCALE THIS DRAWING
- DO NOT USE ELECTRONIC VERSIONS OF THIS DRAWING TO DETERMINE DIMENSIONS UNLESS SPECIFICALLY AUTHORISED BY MICHAEL SPARKS ASSOCIATES
- IF USING AN ELECTRONIC VERSION OF THIS DRAWING FIGURED DIMENSIONS TAKE PRECEDENCE AND NOTIFY MICHAEL SPARKS ASSOCIATES OF ANY DISCREPANCIES

ENSURE SEALING OF ALL JUNCTIONS TO COMPLY WITH PART L.

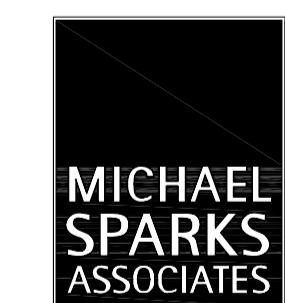
NOTE:  
ROOF AND WALL CLADDING TO BE DESIGNED BY SPECIALIST CONTRACTOR.  
CLADDING DETAILS TO BE READ IN CONJUNCTION WITH THE SPECIFICATION AND ALL RELEVANT BRITISH STANDARDS.  
INCLUDE VAPOUR BARRIER TAPE AROUND ALL OPENINGS AND JUNCTIONS.

ALL DIMENSIONS TO BE CHECKED ON SITE.  
STEEL COLUMN SIZES TO BE CONFIRMED AND TOLERANCES TO BE AGREED.

# AS BUILT

THIS "AS-BUILT" DRAWING IS BASED ON INFORMATION SUPPLIED TO MICHAEL SPARKS ASSOCIATES BY MC LAREN CONSTRUCTION AND INCORPORATES INSTRUCTIONS AND OTHER DESIGN INFORMATION GIVEN TO MC LAREN CONSTRUCTION DIRECTLY BY OTHERS

A	30.03.2009	Refer to sub-contractors drawings for specialist details This supersedes drawing no: 2716/RE/326 rev.F	JH	NSC
REV	DATE	NOTE	DRAW	CHK



FROGMORE

11 PLATO PLACE  
ST. DIONIS ROAD  
LONDON SW6 4TU  
TELEPHONE 020 7736 6162  
FAX 020 7736 3896  
www.msa-architects.co.uk

TITLE  
**CROSSWAYS, DARTFORD**  
DRAWING  
**SCHOONER PARK UNIT 24**  
**ELEVATIONS & SECTIONS**  
CLIENT  
**FROGMORE**

DATE	SCALE	DRAWN
MARCH 2009	1:200 @ A1	JH
	STATUS	CHECKED
	AS BUILT	NSC

DRAWING NUMBER  
**2716 / AB / 1219 A**