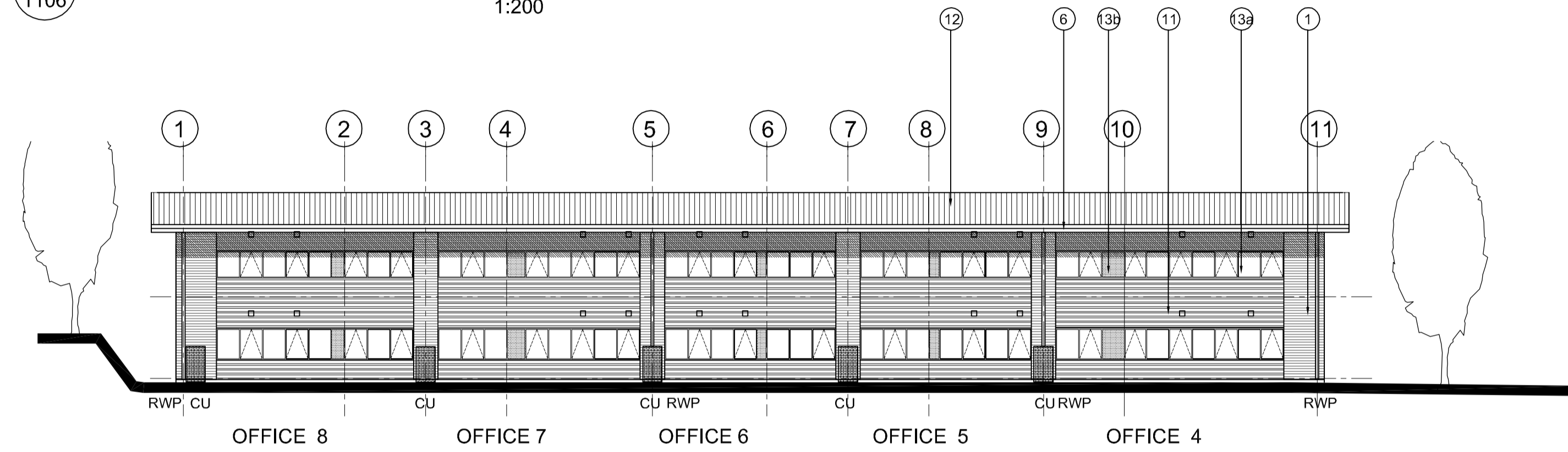
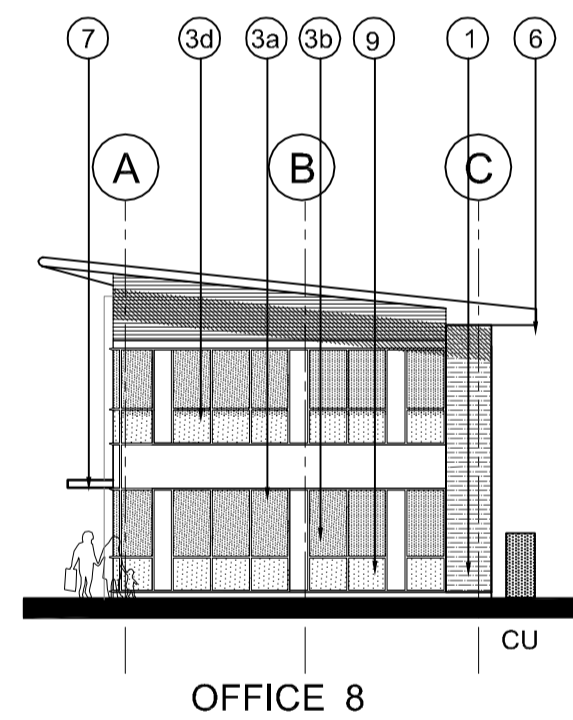


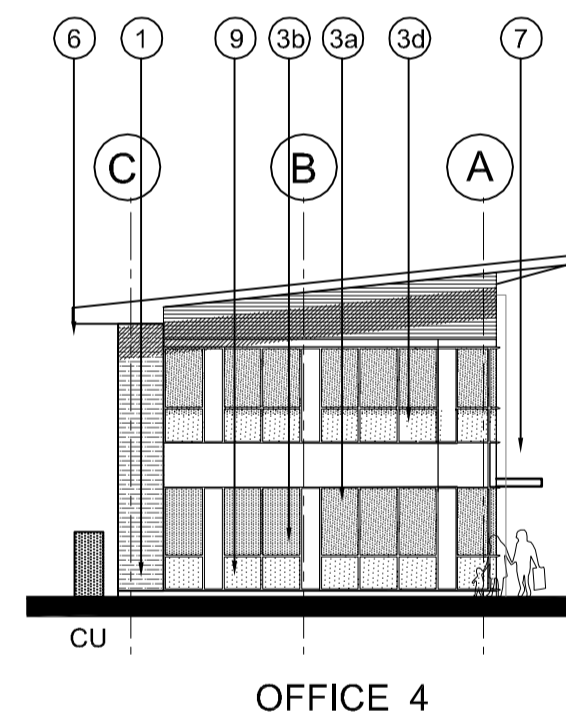
01 WATERSIDE COURT OFFICE 4-8 NORTH ELEVATION  
1106 1:200



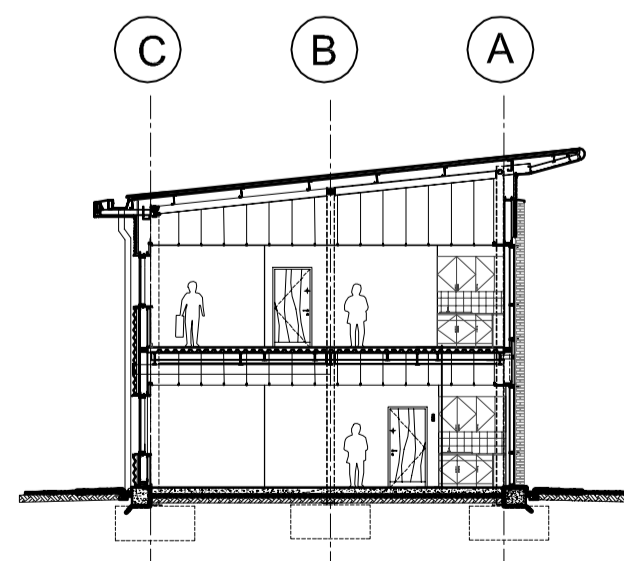
02 WATERSIDE COURT OFFICE 4-8 SOUTH ELEVATION  
1106 1:200



03 WATERSIDE COURT OFFICE 4-8 WEST ELEVATION  
1106 1:200



04 WATERSIDE COURT OFFICE 4-8 EAST ELEVATION  
1106 1:200



05 WATERSIDE COURT OFFICE 4-8 SECTION  
1106

SCHEDULE OF EXTERNAL FACING MATERIALS

OFFICES	
1 Facing Brick	Kingsbury Smooth Cream
2 Wall Cladding	Horizontally laid treated timber boarding
3a Curtain Walling	Clear low E glass in polyester powder coated aluminium curtain walling system. Colour : Charcoal grey RAL 7015 with top hung windows
3b Curtain Walling	Laminated translucent glass in polyester powder coated aluminium curtain walling system. Colour : Charcoal grey RAL 7015
3c Spandrel Panel	Composite flat metal panel in ppc aluminium curtain walling system. Colour : Prisma Silver Metallic RAL 9006
3d Curtain Walling	Laminated blue glass panels in ppc aluminium curtain walling system. Colour : Charcoal grey RAL 7015
4 Roof	Fully Insulated Kingspan KS1000 RW composite roof panel Colour : HPS 200 Albatross Light Grey
5 Sunscreen/ brise soleil	Powder coated aluminium Colour: Metallic Silver RAL 9006
6 Overhanging roof soffit and Fascia	Flat metal panels colour: Prisma Zeus metallic dark grey with recessed downlighters in soffit
7 Entrance Canopy	Flat metal panels colour: Prisma Zeus metallic dark grey with recessed downlighters in soffit
8 Guardrail	Brushed stainless steel
9 Stair Cladding	Flat metal panels colour: Prisma Silver Metallic RAL 9006
10 Profiled Wall Cladding	Horizontally laid sinusoidal profiled steel cladding Colour: Prisma Grey Aluminium RAL 9007
11 Profiled Wall Cladding	Horizontally laid half round profiled steel cladding Colour: Prisma Silver Metallic RAL 9006
12 Windows	Clear low E glass in polyester powder coated aluminium window system. Colour : RAL 7015 Charcoal grey
12a Windows	Laminated translucent glass in polyester powder coated aluminium window system. Colour : Charcoal grey RAL 7015
12b Windows	Blue tinted glazed panels in polyester powder coated aluminium window system. Colour : Charcoal grey RAL 7015
13 Unit number/letter	Stainless Steel numeral
14 High Level Horizontal Band	High Level Recessed Horizontal Feature Band Charcoal grey RAL 7015
15 Joints	Vertical 'T' Flashing
16 Joints	Recessed 300mm wide vertical flashing - colour Charcoal grey RAL 7015

NOTES:

SUBJECT TO STATUTORY CONSENTS  
 SUBJECT TO SURVEY  
 BASED ON OS MAP REPRODUCED BY PERMISSION OF CONTROLLER OF HM STATIONARY OFFICE (c) CROWN COPYRIGHT  
 COPYRIGHT RESERVED  
 DO NOT SCALE THIS DRAWING  
 DO NOT USE ELECTRONIC VERSIONS OF THIS DRAWING TO DETERMINE DIMENSIONS UNLESS SPECIFICALLY AUTHORISED BY MICHAEL SPARKS ASSOCIATES  
 IF USING AN ELECTRONIC VERSION OF THIS DRAWING FIGURED DIMENSIONS TAKE PRECEDENCE AND NOTIFY MICHAEL SPARKS ASSOCIATES OF ANY DISCREPANCIES

ENSURE SEALING OF ALL JUNCTIONS TO COMPLY WITH PART L.

U-Values  
 Roof: 0.25  
 Floors: 0.25  
 Walls: 0.35  
 Glazing: 1.50

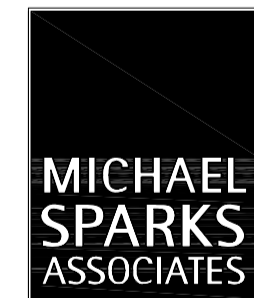
NOTE:  
 ROOF AND WALL CLADDING TO BE DESIGNED BY SPECIALIST CONTRACTOR.  
 CLADDING DETAILS TO BE READ IN CONJUNCTION WITH THE SPECIFICATION AND ALL RELEVANT BRITISH STANDARDS.  
 INCLUDE VAPOUR BARRIER TAPE AROUND ALL OPENINGS AND JUNCTIONS.

ALL DIMENSIONS TO BE CHECKED ON SITE.  
 STEEL COLUMN SIZES TO BE CONFIRMED AND TOLERANCES TO BE AGREED.

AS BUILT

THIS "AS-BUILT" DRAWING IS BASED ON INFORMATION SUPPLIED TO MICHAEL SPARKS ASSOCIATES BY MC LAREN CONSTRUCTION AND INCORPORATES INSTRUCTIONS AND OTHER DESIGN INFORMATION GIVEN TO MC LAREN CONSTRUCTION DIRECTLY BY OTHERS

REV	DATE	NOTE	DRAW	CHK
A	25.03.2009	Refer to sub-contractors drawings for specialist details This supercedes drawing no: 2716/RE/303 rev.H	JH	NSC



FROGMORE

CHARTERED ARCHITECTS  
 11 PLATO PLACE  
 ST. BONS ROAD  
 LONDON SW6 4TU  
 TELEPHONE 020 7736 6162  
 FAX 020 7736 3896  
 www.msa-architects.co.uk

TITLE  
**CROSSWAYS, DARTFORD**  
 DRAWING  
**WATERSIDE COURT OFFICE 4-8**  
**ELEVATIONS & SECTION**  
 CLIENT  
**FROGMORE**

DATE	SCALE	DRAWN
MARCH 2009	1:200 @ A1	AD
	STATUS	CHECKED
	AS BUILT	NSC

DRAWING NUMBER  
**2716 / AB / 1106A**